



Volunteers Make A Difference

CHES FALL FESTIVAL BOOK FAIR BEGINS

October 27th
5:30-7:30PM

CHES PTA presents... Theater IV Students and Parents in Kindergarten and 1st grade were treated to a Theater IV production of The Little Red Hen.

Mark your calendars for our future Theater IV performances.

March 7, 2012 Wonderful World of Simple Machines for grades 2nd & 3rd

April 5, 2012 Harriet Tubman for grades 4th & 5th.

Clover Hill Comrades Committee

The first meeting is Oct 18th at 8:00 p.m. following the PTA meeting in the CHES library. All parents of students with special needs are invited to attend. Question contact Jill Hellman jhellman@verizon.net

Way to go Mrs. Jones

Clover Hill Elementary teacher Cindy Jones created an engaging way students can learn science, technology, engineering and math.

<http://www.facebook.com/chesterfieldschools/posts/234902563225155>

CHES GAZETTE

October '11 Newsletter

PTA Website: <http://chesptaonline.com>



Clover Hill Elementary is the proud recipient of \$100 for our efforts in the Denim Drive. We finished 11th over all. CHES PTA would like to thank Ilene and George Martin at Chesterfield Learning Center for graciously hosting the collection bin. Start saving your denim for next year!

Reflections Entry Deadline - Tuesday October 18th

This year's theme: Diversity Means...

Chesterfield County School Board Candidate Forum

Monday Oct. 17th at 7 pm in the School Administration building, 9900 Krause Rd.. Click on Link Below:

<http://www.chesterfield.gov/eServices/Registrar/Candidates/candidates.aspx?id=6442483162>

Inside this Issue:

- Meet School Board Candidates Night
- Denim Drive Update
- Principals Letter
- Reflections Deadline
- Theater IV @ CHES
- School Board News

WAYS to help CHES

- Martins' A+ Rewards Card
- Coke Rewards
- Saving Campbell Soup UPC's
- Saving Tyson A+ Labels
- Donate Used cartridges to Cartridge World
- Using your Kroger Plus card
- Saving Box Top\$



Join CHES PTA on Facebook!

Quote of the Month

'Do not go where the path may lead; go instead where there is no path and leave a trail'.

Ralph Waldo Emerson

GENTLE EAST MARTIAL ARTS

Taekwondo for the Whole Family

Little Dragons for 4-6 year olds
 Birthday Parties
 Bully Prevention
 Self-Defense
 MMOMA (Mothers' Morning of Martial Arts)
 Traditional Taekwondo For All Ages

Now Offering Two Week Free Trials!

Contact us to learn more
 or schedule a free trial

(804) 739-2715 info@gema-va.com
 6911 Chital Drive Midlothian, VA 23112

A family owned martial arts school, proudly serving students for over 23 years.

Dates to Remember

2011-2012 School Year

October 2011 :

- 11th - Fall Pictures
- 12th - Parent Education Night 6-8pm
- 14th - Inflation Nation (6-8PM)
- 17th - **School Board Candidates Forum** --(7:00 PM -School Board Administration Building, 9900 Krause Road)
- 18th - **Reflections Entry Deadline**
- 18th - PTA Board Mtg 6:30pm - OPEN TO ALL (Babysitting Provided)-
 Clover Hill Comrades first meeting to follow at 8PM
- 20th - Chick-Fil-A Night 5:00-8:00pm
- 21st - PTA Newsletter Deadline
- 26th - 3-hour Early Release
- 27th - Book Fair Begins
- 27th - Fall FEST 5:30-7:30pm (CHES)



Primrose School
 at Swift Creek
804.744.0787

Passionate teachers.
 Happy children.

Our teachers love Primrose as much as our children do. Our proprietary, accredited curriculum assures that children are nurtured emotionally, physically, and intellectually.

- ✓ Best in Class Early Childhood Educators
- ✓ Ongoing customized student assessment
- ✓ Music, Spanish, Computer Technology

Primrose Schools
 The Leader in Educational Child Care®

Educational Child Care for Infants through
 Private Kindergarten and After School

Each Primrose School is privately owned and operated. Primrose Schools and The Leader in Educational Child Care are trademarks of Primrose School Franchising Company. ©2010 Primrose School Franchising Company. All rights reserved.



HAPPY BIRTHDAY

October

- 10/15 - Mrs. Barker
- 10/25 - Mrs. Nowlin
- 10/28 - Mrs. Caul

CHES PTA Presents...

A Family Night Out at

Chick Fil A

October 20th

5:00-8:00 PM

12301 Chattanooga Plaza

Midlothian, VA 23112

804-744-9092

Questions: contact Mary Kathryn van Eerden at mkvaneerden@verizon.net



Woodlake Music Studio

Cello, Piano, Violin lessons
 (804) 922-9443

e-mail: PianoTeacherVA@aol.com
www.WoodlakeMusic.com

Now accepting new students for Fall 2011

- * Certified music teacher ~ double Ivy League graduate *
- * 9 years public school music teaching experience *

Chamber Music classes forming for summer & fall
 Duets, trios, quartets - wind players welcome!

"Adult Learn to Play Strings" classes now forming!

Ask about:

Songwriting Workshop for teens and adults

"Piano Crash Course" for musicians



"Music is enough for a lifetime, but a lifetime is not enough for music"
 ~ Sergei Rachmaninoff

CHES PTA is thrilled to have the support and participation of so many Community Businesses. PTA members should receive their membership card, key-tag and some other goodies the week of Oct.10th. There is also a list of our community business members along with their discounts.

There are two correction to that list. **Healing Massage** is a **\$10 discount** not 10% and **Jewelry by JDH** is **20%** not 10%. If you have paid for a membership and didn't receive your membership card, please contact Jamie Hart membership@chesptaonline.com. Thanks for supporting CHES.

“Building Bright Futures; Educating Future Leaders”

A Message from Mrs. Hines, Principal

What an incredible turn-out for our Back-to-School Nights. Research tells us that one of the most critical factors to student success is parent support and parent modeling that education is something to be valued. Our parents reinforce this daily for their children and we see the results in the classrooms.

During September, Mrs. Brown and I met with each grade-level team during resource to reinforce Core Values with the students while honoring and remembering the heroes of 9/11. Just to remind you, the Core Values are: Respect, Responsibility, Honesty, and Accountability. This year we have renamed our recognition program – CHES Core Value Clover Awards. Each month every homeroom teacher will submit the name of their Core Value Student of the Month. These students will be recognized on the Morning Announcements, receive an award certificate and a gift certificate. Grade level pictures will be taken. At the end of the school year each of these monthly award recipients will become eligible to be recognized as the grade level's Core Value Student of the Year and the student along with his/her parent(s) will be invited to enjoy breakfast together at the school and additional recognition. From these students who represent each grade level, one primary grade student and one upper grade student will be named CHES Core Value Students of the Year. These two students will be recognized at the yearly CCPS Student of the Year banquet.

As a reminder from last October, you can be a POWER PARENT. I would like to share with some tips from the October 2010 “Home School Connection” (current issues available in the front foyer of CHES)

PARENT POWER: There are many ways you can support your child's learning and school. Here are a few ideas:

1. Spend a few minutes every evening looking over handouts your youngster brings home. Fill out forms to return the next day.
2. Tell your child's teachers if you can help them out at school or home.
3. Make sure teachers know you appreciate their efforts. From time-to-time, send a thank-you note or an email.
4. Contact your youngster's teacher immediately if you see a problem. Working together will help your child succeed.
5. Attend conferences, parent meetings, and school events regularly.

STUDY SMARTS: Help your child study with these tips.

Start a Habit. Encourage your youngster to treat studying as a daily assignment, not just something she does the evening before a test. For example, she might study 15 minutes every night for a spelling test on Friday. After she finishes her regular homework, she can spend a little more time reviewing her notes and handouts.

Tackle Textbooks. When your child has a chapter to study, have him “preview” it to increase his understanding. He should glance over headings, graphics, and photos and go to the glossary to look up boldfaced words. *Tip:* If he finds a section hard to grasp, he could read a picture book on the topic. For a science unit on matter, for instance, he could try *What is the World Made Of?* By Kathleen Weider Zoehfeld.

Mix it Up. If your youngster reviews information in several ways, she'll be more likely to remember it. She might use colored pencils to copy each spelling word or math fact onto a separate index card. Then, she can shuffle the cards and study them in a different order each time. For extra reinforcement, suggest that she spell each word or recite each fact aloud.

As partners in your child's education, Clover Hill Elementary School and Chesterfield County Public Schools are available to help meet the needs of your child and your family. The Parent Teacher Resource Center is a wonderful source of information and support. Please consider contacting them through Charlene Lee at 279-7311 or via the link on the Chesterfield County Public Schools website.

Ways to Help CHES:

Take your empty ink cartridges to Cartridge world



Donate My Coke Rewards

<http://www.mycokerewards.com/mcrSchools.do>

Donate points to your school, so it can get rewards like art supplies and sports equipment, and support all the ways kids play.

Even the smallest point contribution can lead to great things for students in your community.



Attention business owners...anytime you order lunch through Chick-fil-A for your employees, tell them you're with CHES.

CHES will receive a portion of the proceeds at our next
Family Night Out.

MARTIN'S A+ School Rewards Program

Starting October 9, 2011 through March 31, 2012 Clover Hill Elementary will be able to earn cash through Martin's A+ School Rewards Program. You can register your card online at www.martinsfoods.com/aplus or call 1-888-448-4642. Although our school participated in this program last year, your card has to be re-registered for this year's program. This is a great opportunity for us to earn money for our school!

Shop Chesterfield First

Shop Chesterfield First

is a campaign to promote and support Chesterfield County businesses and grow our local economy. We are striving to make our county residents' hard-earned dollars go further by supporting county businesses, which in turn helps preserve everything we hold dear about Chesterfield County. This includes national chain stores as well as locally owned businesses.

Please visit: <http://www.shopchesterfieldfirst.com/> -

Meet your 2011-2012 CHES PTA

https://spreadsheets.google.com/a/chesptaonline.com/spreadsheet/pub?hl=en_US&hl=en_US&key=0AgCOYJz46ZBXdc1sWmQ2QIR1bEhYSWs3b0J6UUhqMHc&single=true&gid=0&output=html&ndplr=1

Visit our CHES PTA website <http://chesptaonline.com/>

New this year...CHES PTA Membership keytag!

Join the CHES PTA and receive discounts at participating business in our area. To see our Community Business Partners, go to [PTA Member Discounts with Community Partners](#) under Programs. If you know of a business that would like to join our Community Partnership, please contact Jamie Hart jamiedhart@yahoo.com or Amy McCreight douglasmom99@hotmail.com

Our Newest Business Partners!!!

Chesterfield Learning Center
Personalized Tutoring

Dr. George J. Martin
Director

6920 Woodlake Commons Loop
Midlothian, VA 23112

Tel: 804-739-0861
Fax: 804-739-3220

www.ChesterfieldLearningCenter.com
ChesterfieldLearningCenter@gmail.com



CAKES*COOKIES*CUPCAKES*BROWNIES AND MORE

SANA L. AZIZ
Executive Pastry Chef
Midlothian, VA
Phone (804) 677-6147
ChefSanaAziz@gmail.com
www.SWEETCREATIONS.CO

PLAYBILL

SPOTLIGHT STUDIO



Spotlight Studio
of
Dance



A Neighborhood Studio for
Children and Adults

BALLET • JAZZ • TAP • POINTE • MODERN
IRISH • HIP HOP • MUSICAL THEATRE
LYRICAL • YOGA • CONTEMPORARY
BALLROOM • CREATIVE MOVEMENT
BURLESQUE • DANCE FIT • DANCE TEAM
TUMBLING • ADULT AND BOYS CLASSES
MOTHER & DAUGHTER • MOTHER & SON
BABY & ME

6828 Woodlake Commons Loop, Midlothian, VA 23112
Call for details 639-1186, stop by for a tour, or visit Spotlightstudio.net

GO GREEN CLOVER HILL

<http://gogreencloverhill.blogspot.com>



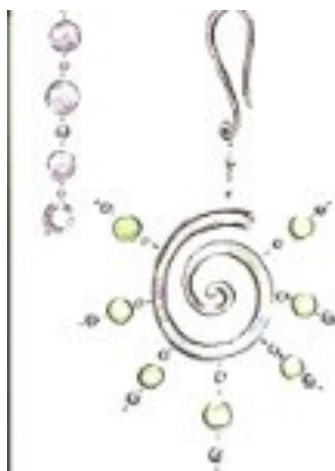
Papa John's Store #1590

6633 Lake Harbour Drive

MIDLOTHIAN, VA 23112

Phone: (804)639-7979

1.90 miles [Get directions](#)



Jewelry By JDH

Joan D. Haskins
Designer

13711 Sunrise Bluff Rd.
Midlothian, VA 23112

804-307-9986

JDHaskins@Verizon.net

JewelryByJDH.city.com

School Board News

Chesterfield County School Board has put forth a new and improved website to help keep the public informed of meeting times and agenda items. Take a moment to stay informed on what affects your children and click on web page below:

<http://www.boarddocs.com/vsba/chesterfield/Board.nsf/Public>

The Chesterfield County School Board is committed to a public engagement process that allows the community to invest in and benefit from the public school system. The board's intent is to work with the community to deliver the high level of service and education that Chesterfield County residents expect and deserve. School Board members welcome constituent input and feedback:

Write to School Board members at P.O. Box 10, Chesterfield, VA 23832.

Dianne E. Pettitt, Clover Hill District (represents CHES)
(804) 897-0075 voice mail and fax

U. Omarh Rajah, Matoaca District (represents CHES)
(804) 639-8035 voice mail
(804) 639-8036 fax

For more information, contact Board Clerk Carol Timpano or Deputy Clerk Deborah Hodges at (804) 748-1497.

2011 School Board Meeting Schedule

[http://www.boarddocs.com/vsba/chesterfield/Board.nsf/files/8HLS9A6DACB5/\\$file/Board%20Schedule%20-%202011.pdf](http://www.boarddocs.com/vsba/chesterfield/Board.nsf/files/8HLS9A6DACB5/$file/Board%20Schedule%20-%202011.pdf)

"Fridays are Spirit Days!

Show your school or team spirit every Friday by wearing your favorite CHES tshirt or a sports team jersey or shirt.

To order CHES spirit wear,

contact Sherri Ingram in-grams4vt@yahoo.com or visit the website."

Box Top\$ Challenge

Please send in your Box Top\$ to help your class win the catered pizza party.

..." Last year, CHES students raised \$4307.00 in Box Tops money for the school"



Clover Hill Elementary PTA Membership Application

Yes! I would like to become a CHES PTA Member

Please make your checks payable to "CHES PTA" and return the application in the attached envelope or mail it to : CHES PTA at Clover Hill Elementary School, 5700 Woodlake Village Parkway, Midlothian, VA 23112.

Member 1 Name _____

Member 2 Name _____

Street Address _____

City _____ State _____ Zip _____

Home Phone () _____ Cell Phone () _____

Child's Name _____ Grade _____ Teacher _____

Child's Name _____ Grade _____ Teacher _____

Child's Name _____ Grade _____ Teacher _____

Yes! Please sign me up for PTA Emails updates and monthly Newsletters (with important info from the PTA as well as from the school). You can input your own e-mail by signing up online at: www.chesptaonline.com/lists. You will be emailed with a request to confirm your membership. Please make sure to click the link in that message to confirm your subscription.

e-mail address 1** _____

e-mail address 2** _____

Total # of Members _____

Total Membership Dues: \$ _____

** By providing your email, you are agreeing to accept PTA emails. You can unsubscribe at any time here:
<http://www.chesptaonline.com/lists>

PTA USE ONLY

PTA Representative _____ Date _____

Cash \$ _____ Check # _____

Keytag and discount list issued Membership Card Issued Contact Information Registered